

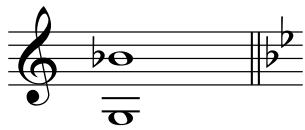
Shackles (Praise You)

ALTO

Arranged by Elaine Wilson

Mary Mary

RANGE



$\text{♩} = 90$

CHORUS



Take the shack-les off my feet so I can dance



I just wan-na praise ya I just wan-na praise ya You



broke the chains now I can lift my hands And I'm gon-na praise ya I'm gon-na

VERSE 1



praise ya Ah oo Ah oo ah oo break free ah



oo Ah oo ba da da da I should praise you Take the

CHORUS



shack-les off my feet so I can dance I just wan-na praise ya I just wan-na

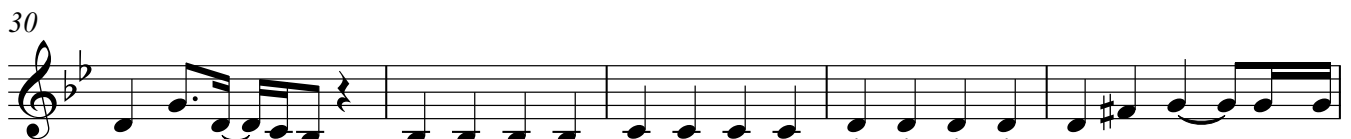


praise ya You broke the chains now I can lift my hands And I'm gon-na

VERSE 2



praise ya I'm gon-na praise ya Ah oo Ah oo ah oo Gon-na




lose my mind oo oo oo oo oo oo oo oo oo oo oo ah Take the

CHORUS



shack-les off my feet so I can dance I just wan-na praise ya I just wan-na

V.S.

38

 praise ya You broke the chains now I can lift my hands_____ And I'm gon-na

41


 praise ya I'm__ gon - na praise ya Ah oo_____

44

 ah let me go__ right__ now__ Take the

47 **CHORUS**

 shack-les off my feet so I can dance_____ I just wan-napraise ya I just wan-na


50

 praise ya You broke the chains now I can lift my hands


52

 And I'm gon-na praise ya I'm__ gon-na praise ya Take the

55 **CHORUS**


 shack-les off my feet so I can dance_____ I just wan-napraise ya I just wan-na

58

 praise ya You broke the chains now I can lift my hands

60

 And I'm gon-na praise ya I'm__ gon-na praise ya Take the

63 **FINAL CHORUS**

 shack-les off my feet so I can dance_____ I just wan-napraise ya I just wan-na

66

 praise ya You broke the chains now I can lift my hands

68

_____ And I'm_ gon-na praise ya I'm_ gon-na praise ya Yeah!

The image shows a musical score for an alto voice part, measures 68 through 71. The music is written on a single staff in treble clef with a key signature of one flat (B-flat). Measure 68 begins with a whole rest, indicated by a horizontal line below the staff. The melody starts in measure 69 with a quarter note G4, followed by eighth notes A4 and Bb4, and a quarter rest. Measure 70 features a quarter note C5 with a sharp sign, followed by eighth notes Bb4 and A4, and a quarter rest. Measure 71 continues with a quarter note G4, followed by eighth notes A4 and Bb4, and a quarter rest. The piece concludes with a double bar line.